



www.EnglishGardens.com • 1-800-335-GROW



Corsican Mint
Mentha requienii

Height: 1 inch

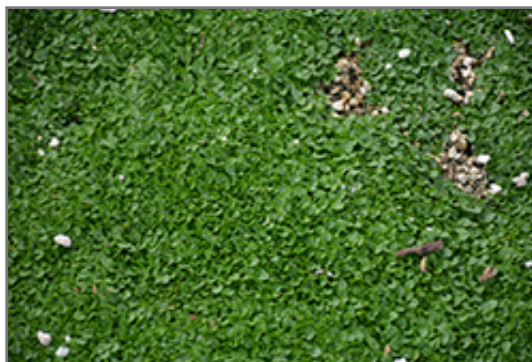
Spread: 12 inches

Sunlight: ☉ ●

Hardiness Zone: 6b

Description:

The smallest of Mints, this variety forms a flat carpet of tiny green leaves with intense fragrance; plant between flagstones as groundcover; will often self seed for years; a great base plant for containers



Corsican Mint foliage
Photo courtesy of NetPS Plant Finder

Ornamental Features

Corsican Mint features tiny spikes of lilac purple tubular flowers rising above the foliage from mid to late summer. Its attractive tiny fragrant round leaves remain green in color throughout the season.

Landscape Attributes

Corsican Mint is an herbaceous perennial with a ground-hugging habit of growth. It brings an extremely fine and delicate texture to the garden composition and should be used to full effect.

This is a relatively low maintenance plant, and should be cut back in late fall in preparation for winter. It is a good choice for attracting bees and butterflies to your yard, but is not particularly attractive to deer who tend to leave it alone in favor of tastier treats. Gardeners should be aware of the following characteristic(s) that may warrant special consideration;

- Invasive

Corsican Mint is recommended for the following landscape applications;

- Mass Planting
- Rock/Alpine Gardens
- Border Edging
- General Garden Use
- Container Planting

Ann Arbor
734-332-7900
155 N. Maple at Jackson

Clinton Twp.
586-286-6100
44850 Garfield Rd.

Dearborn Heights
313-278-4433
22650 Ford Rd.

Eastpointe
586-771-4200
22501 Kelly Rd.

Royal Oak
248-280-9500
4901 Coolidge Rd.

West Bloomfield
248-851-7506
6370 Orchard Lake Rd.



www.EnglishGardens.com • 1-800-335-GROW

Planting & Growing

Corsican Mint will grow to be only 1 inch tall at maturity, with a spread of 12 inches. Its foliage tends to remain low and dense right to the ground. It grows at a fast rate, and under ideal conditions can be expected to live for approximately 10 years. As an herbaceous perennial, this plant will usually die back to the crown each winter, and will regrow from the base each spring. Be careful not to disturb the crown in late winter when it may not be readily seen!

This plant does best in full sun to partial shade. It prefers to grow in average to moist conditions, and shouldn't be allowed to dry out. It is not particular as to soil type or pH. It is highly tolerant of urban pollution and will even thrive in inner city environments. This species is not originally from North America. It can be propagated by division.

Corsican Mint is a fine choice for the garden, but it is also a good selection for planting in outdoor pots and containers. Because of its spreading habit of growth, it is ideally suited for use as a 'spiller' in the 'spiller-thriller-filler' container combination; plant it near the edges where it can spill gracefully over the pot. Note that when growing plants in outdoor containers and baskets, they may require more frequent waterings than they would in the yard or garden. Be aware that in our climate, this plant may be too tender to survive the winter if left outdoors in a container. Contact our experts for more information on how to protect it over the winter months.

Ann Arbor 734-332-7900 155 N. Maple at Jackson	Clinton Twp. 586-286-6100 44850 Garfield Rd.	Dearborn Heights 313-278-4433 22650 Ford Rd.	Eastpointe 586-771-4200 22501 Kelly Rd.	Royal Oak 248-280-9500 4901 Coolidge Rd.	West Bloomfield 248-851-7506 6370 Orchard Lake Rd.
-------------------------------------------------------------	-----------------------------------------------------------	-----------------------------------------------------------	------------------------------------------------------	-------------------------------------------------------	-----------------------------------------------------------------